



**BONZER**<sup>®</sup>  
TILES

**BONZER**<sup>®</sup>  
TILES

Corp. Office:  
202, Dev Arc, Opp. Iskon Temple,  
S.G. Highway, Ahmedabad 380 015.  
Gujarat, INDIA.  
Ph.: +91 79 6612 5541 /, Fax: +91 79 6612 5600  
Email: [contact@bonzer7.com](mailto:contact@bonzer7.com), [info@bonzer7.com](mailto:info@bonzer7.com)  
[www.bonzer7.com](http://www.bonzer7.com)  
Toll Free No. 1800 123 4475

Follow us on



**BONGRES**  
600x1200mm

BEAUTY THAT DEFINES

*Agelessness*





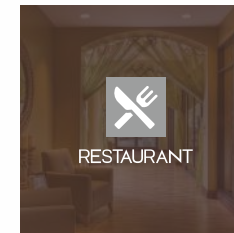
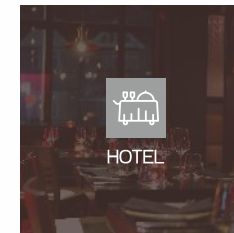
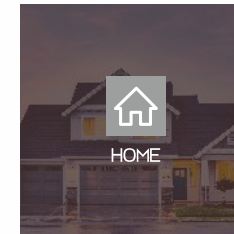
**BONZER<sup>7</sup>**  
TILES

## About Us

With our unvarying focus towards creating a comprehensive collection of formidable products and exceptional service, we have fast become one of the front-runners in the ceramic space. We aspire to use our expertise and ardor to turn your dreams into reality.

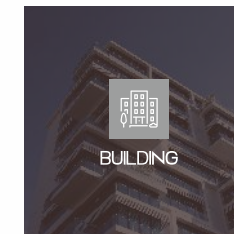
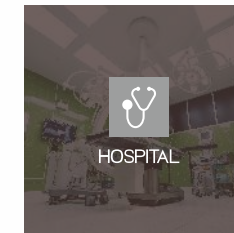
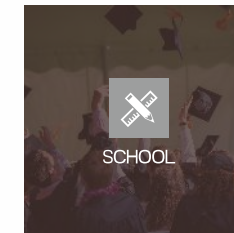
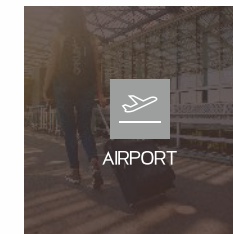
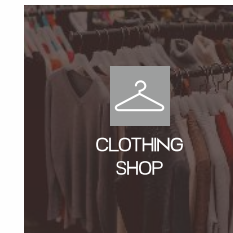
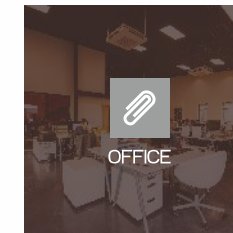
We are always striving to upgrade our technology to manufacture superior products. At Bonzer7, we follow the adage 'Inspired By You'. It is a priority for us to meet the expectations of our customers fittingly. Our efforts are directed towards providing our customers new designs with unmatched quality.

A testament to our 'customer first approach' is our happy customers. We have become the preferred brand of country's prime architects, interior designers, custom home builders, developers and astute homeowners in a short span of time.



## Application

The are the most common of type of surface used for your place.



## Features



RECTIFIED



MODULAR



FIRE  
RESISTANT



ANTI  
BACTERIAL



ABRASION



FROST  
RESISTANCE



IMPACT  
RESISTANT



WATER  
RESISTANT



CHEMICAL  
RESISTANT



RESISTANT  
TO BENDING

Here are a few of the main features that make these tiles a practical yet versatile stylish optioni



**BONGRES**  
600x1200mm

*Carving*  
COLLECTION

The carving Effect is one of the best choices for interior and architecture design. The carving effect not only provides a depth effect to your Surface but also adds a shining effect.



DIGITAL PRINTING

CARVING LAYER

BODY

HIGH GLAZED WHITE LAYER

FEATURES



RECTIFIED



MODULAR



FIRE  
RESISTANT



ANTI  
BACTERIAL



ABRASION



FROST  
RESISTANCE



WATER  
RESISTANT



IMPACT  
RESISTANT



RESISTANT  
TO BENDING



CHEMICAL  
RESISTANT





Rectified



Modular



Fire  
Resistant



Anti  
Bacterial



Abrasion



Frost  
Resistance



Water  
Resistant



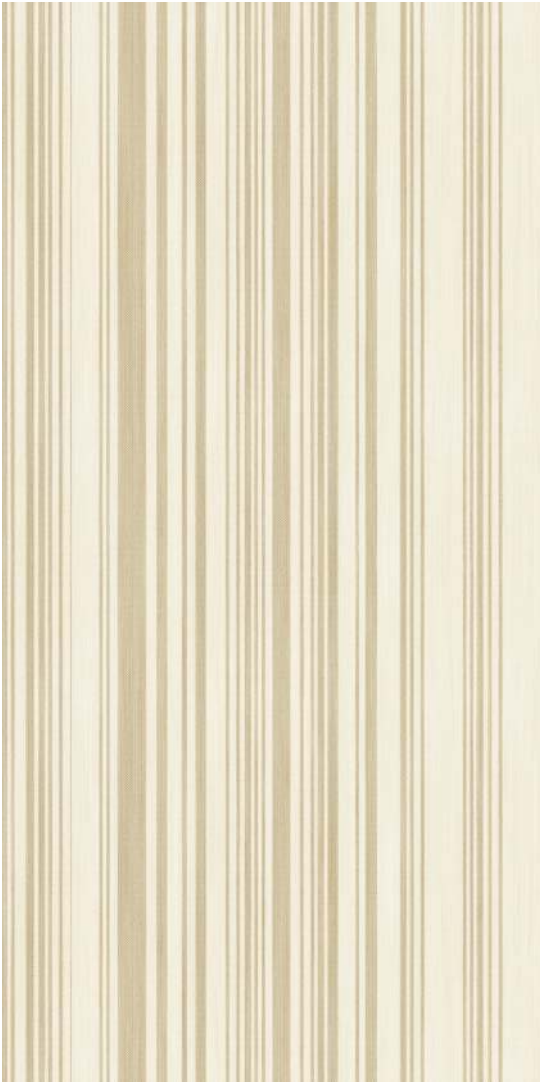
Impact  
Resistant



Resistant  
To Bending



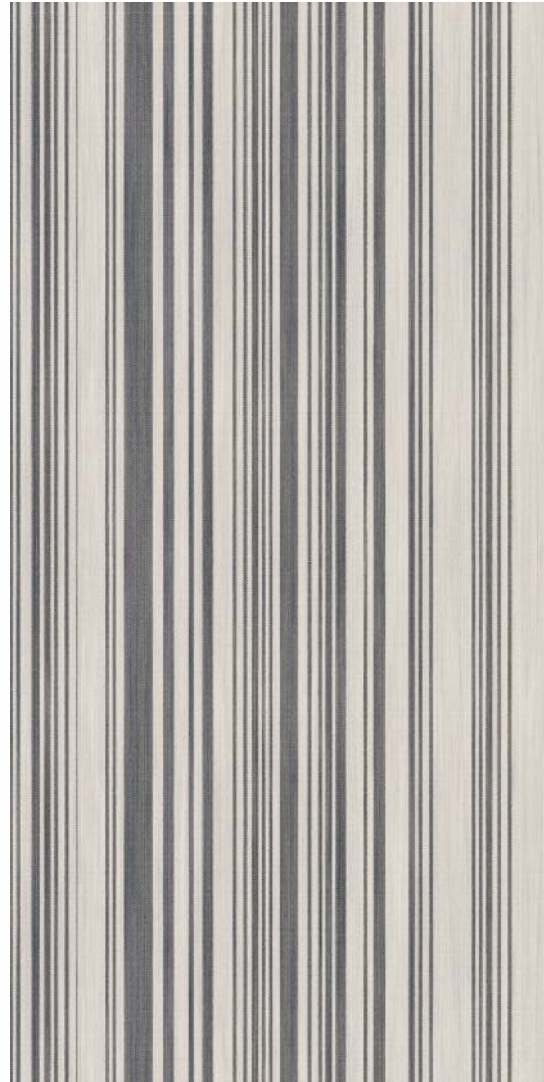
Chemical  
Resistant



ZIPPO IVORY  
ZIPPO BEIGE DECOR  
ZIPPO BEIGE

Size: 600x1200mm  
Finish: Carving

Available Random - 1



ZIPPO BIANCO  
ZIPPO GREY DECOR  
ZIPPO GREY

Size: 600x1200mm  
Finish: Carving

Available Random - 1



Wall: Zippo Bianco & Zippo Decor  
Floor: Zippo Grey

Size: 600x1200mm | Finish: Carving





Rectified



Modular



Fire  
Resistant



Anti  
Bacterial



Abrasion



Frost  
Resistance



Water  
Resistant



Impact  
Resistant



Resistant  
To Bending



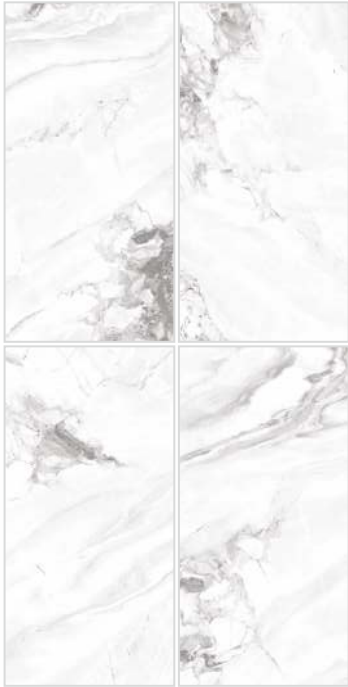
Chemical  
Resistant



HAVANA PEARL

Size: 600x1200mm  
Finish: Carving

Available Random - 5



EMILIA WHITE

Size: 600x1200mm  
Finish: Carving

Available Random - 4



LAUREN CREMA

Size: 600x1200mm  
Finish: Carving

Available Random - 3



Floor: Lauren Crema  
Size: 600x1200mm | Finish: Carving





Rectified



Modular



Fire  
Resistant



Anti  
Bacterial



Abrasion



Frost  
Resistance



Water  
Resistant



Impact  
Resistant



Resistant  
To Bending



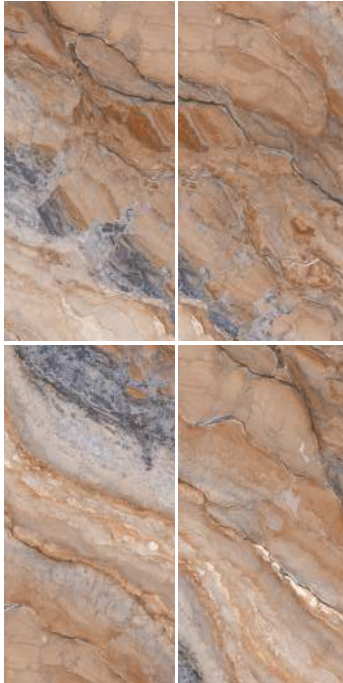
Chemical  
Resistant



VICTORIA BROWN

Size: 600x1200mm  
Finish: Carving

Available Random - 4



ANDRIA GREY  
ANDRIA DECOR

Size: 600x1200mm  
Finish: Carving

Available Random - 1



Wall: Andria Decor & Andria Grey  
Floor: Andria Grey

Size: 600x1200mm | Finish: Carving





Rectified



Modular



Fire  
Resistant



Anti  
Bacterial



Abrasion



Frost  
Resistance



Water  
Resistant



Impact  
Resistant



Resistant  
To Bending



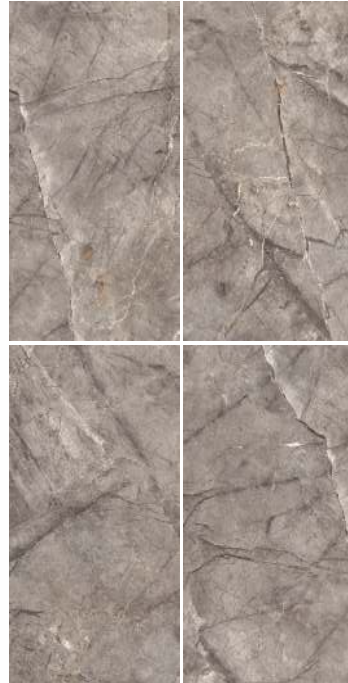
Chemical  
Resistant



ARTICO NATURAL

Size: 600x1200mm  
Finish: Carving

Available Random - 4



MAGIC CREMA  
MAGIC DECOR

Size: 600x1200mm  
Finish: Carving

Available Random - 3

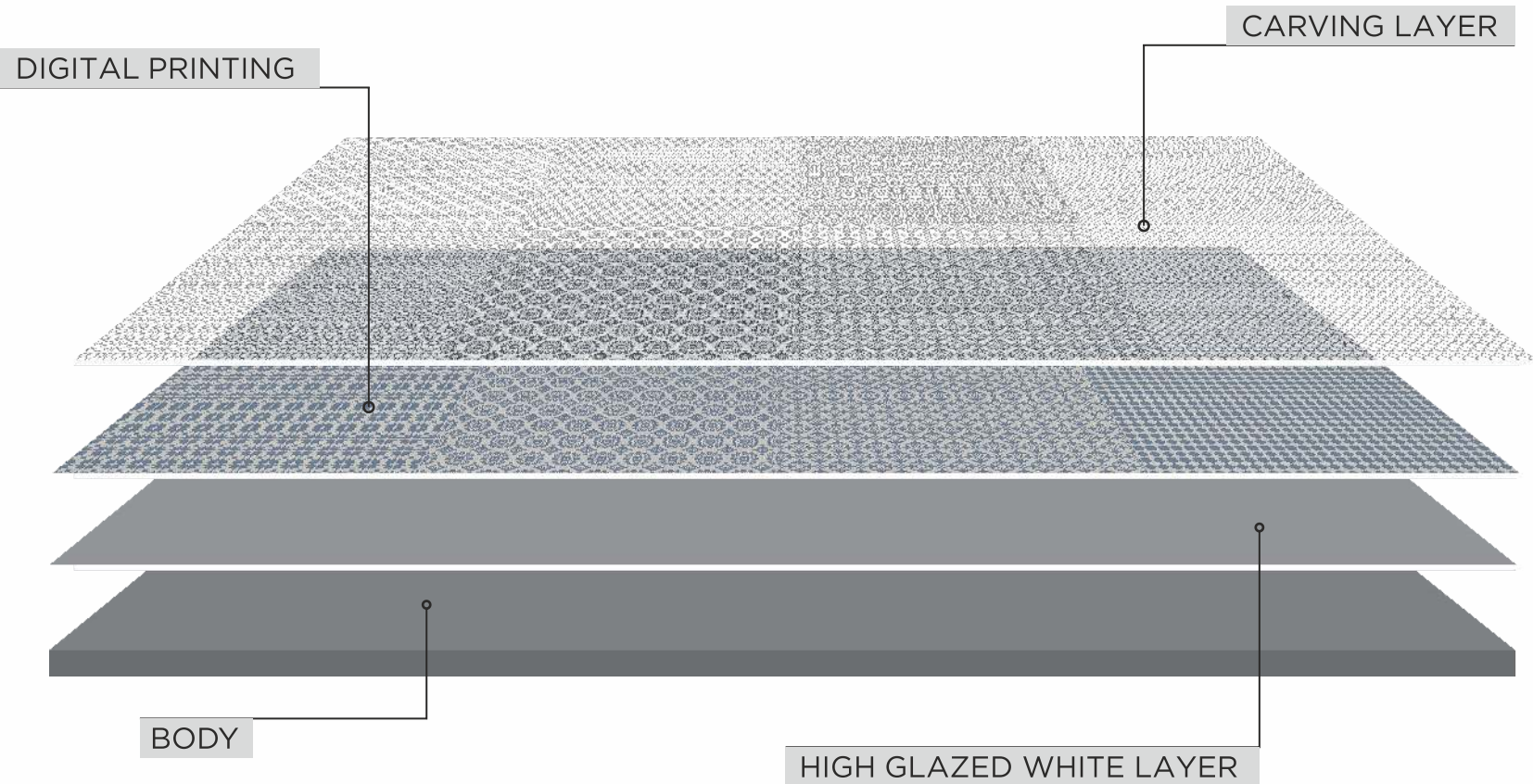
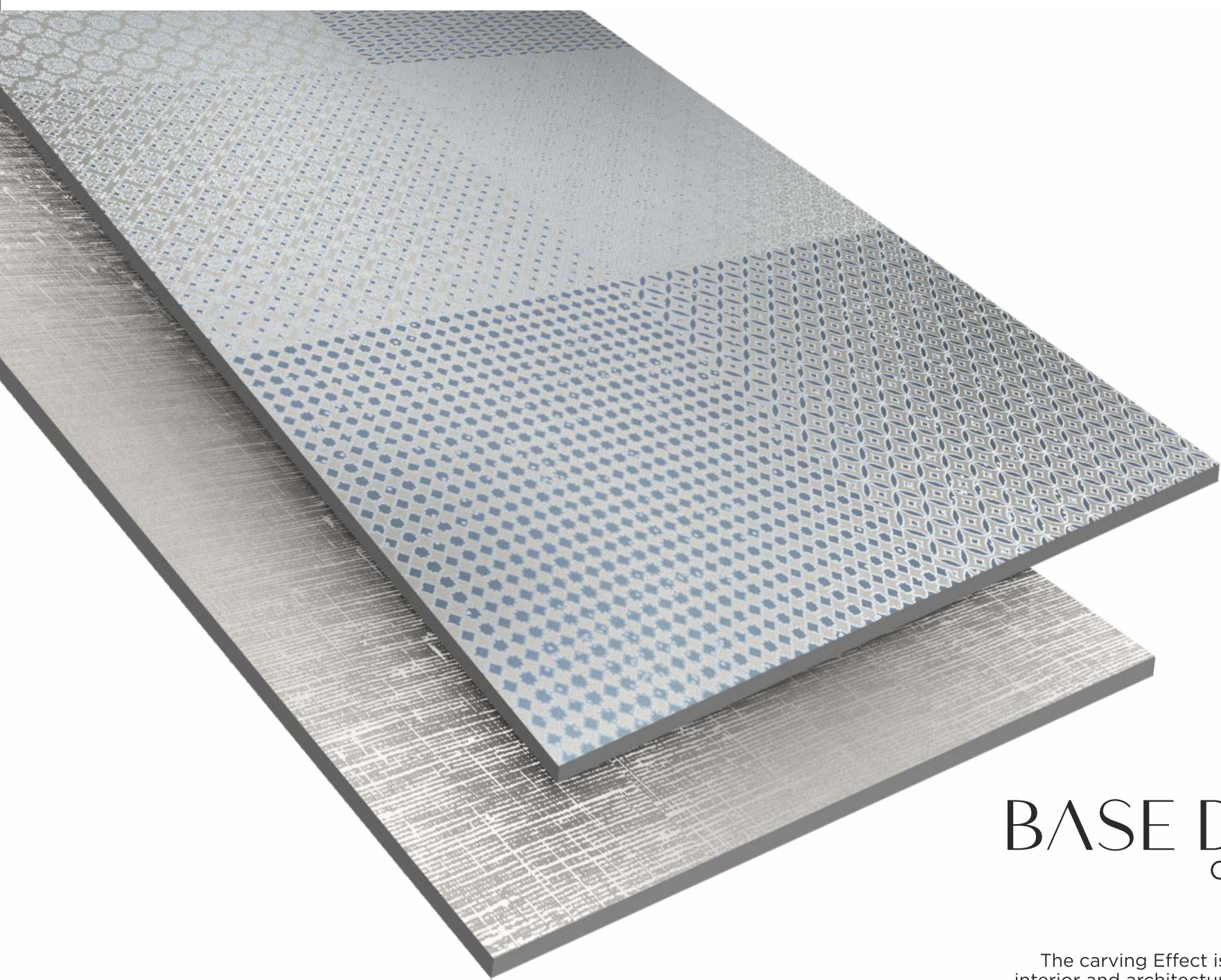


Floor: Magic Crema & Magic Decor

Size: 600x1200mm | Finish: Carving



The carving Effect is one of the best choices for interior and architecture design. The carving effect not only provides a depth effect to your Surface but also adds a shining effect.



FEATURES

- |   |   |   |   |   |   |   |   |   |   |
|---|---|---|---|---|---|---|---|---|---|
|  |  |  |  |  |  |  |  |  |  |
| RECTIFIED   | MODULAR   | FIRE<br>RESISTANT   | ANTI<br>BACTERIAL   | ABRASION  | FROST<br>RESISTANCE   | WATER<br>RESISTANT  | IMPACT<br>RESISTANT   | RESISTANT<br>TO BENDING   | CHEMICAL<br>RESISTANT   |





Rectified



Modular



Fire  
Resistant



Anti  
Bacterial



Abrasion



Frost  
Resistance



Water  
Resistant



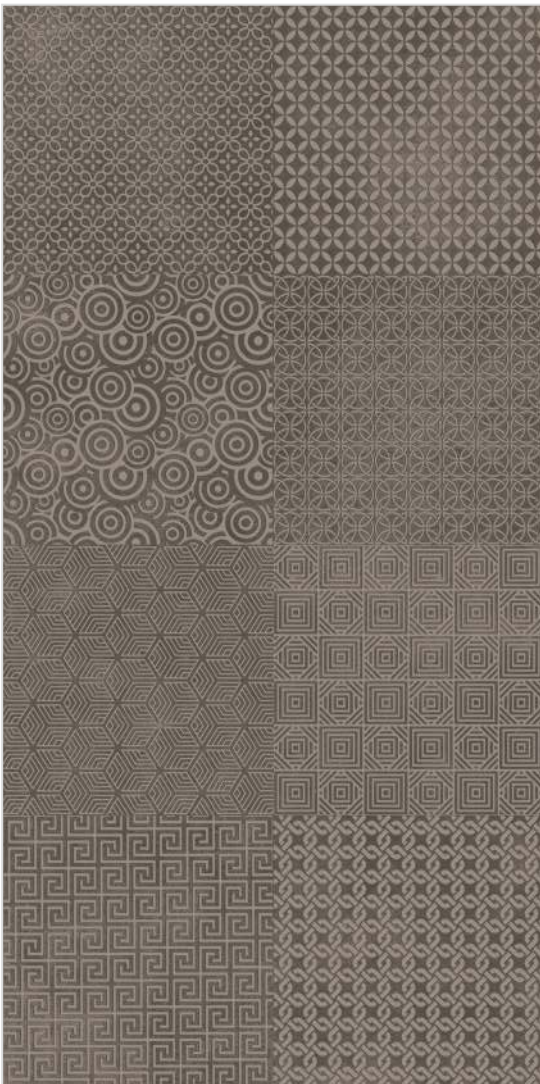
Impact  
Resistant



Resistant  
To Bending



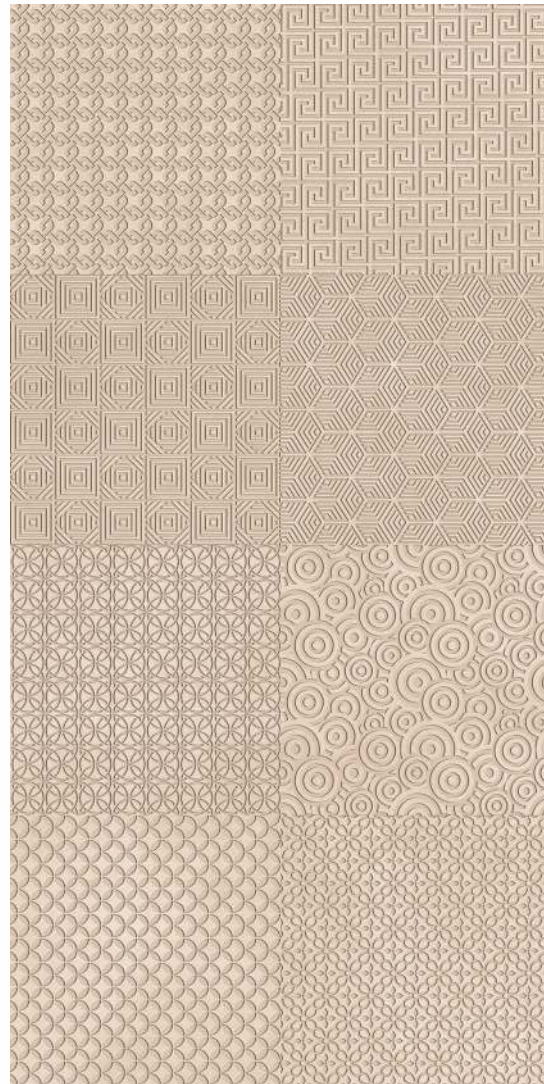
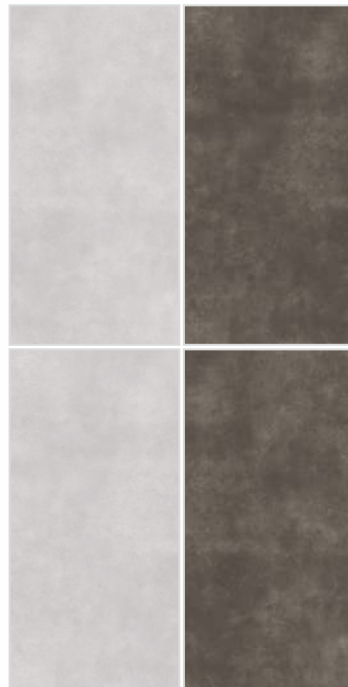
Chemical  
Resistant



NORDIC ICE  
NORDIC NERO DECOR  
NORDIC NERO

Size: 600x1200mm  
Finish: Matt Carving

Available Random - 6



NORDIC VERDE  
NORDIC VERDE DECOR  
NORDIC BROWN

Size: 600x1200mm  
Finish: Matt Carving

Available Random - 6



Wall: Nordic Verde Decor & Nordic Verde  
Floor: Nordic Verde

Size: 600x1200mm | Finish: Matt Carving





Rectified



Modular



Fire  
Resistant



Anti  
Bacterial



Abrasion



Frost  
Resistance



Water  
Resistant



Impact  
Resistant



Resistant  
To Bending



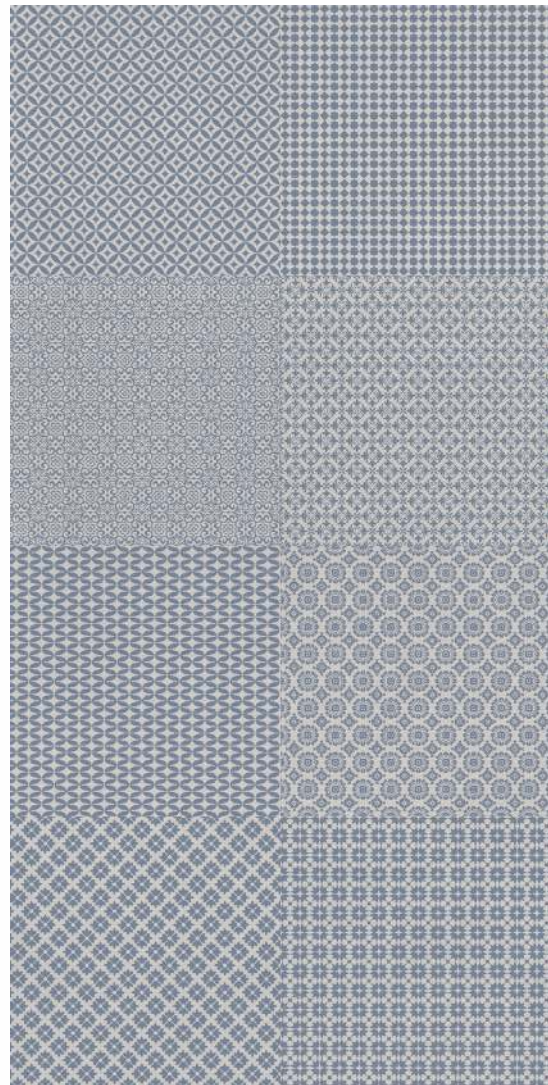
Chemical  
Resistant



SAHARA CRYPTO  
DÉCOR

Size: 600x1200mm  
Finish: Matt Carving

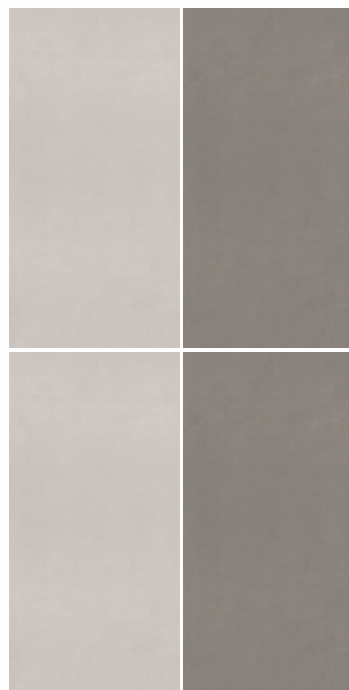
Available Random - 2



ALBINO GREY  
ALBINO GREY DECOR  
ALBINO GRIS

Size: 600x1200mm  
Finish: Matt Carving

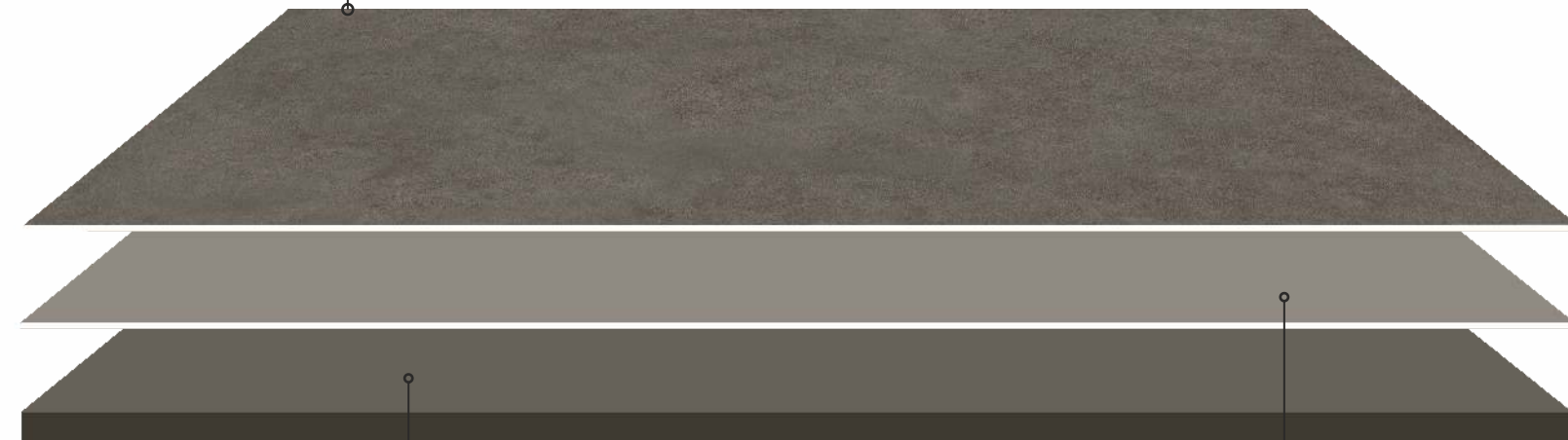
Available Random - 1



Wall: Albino Gris  
Floor: Albino Grey Decor & Albino Grey  
Size: 600x1200mm | Finish: Matt Carving



DIGITAL PRINTING



BODY

HIGH GLAZED WHITE LAYER

#### FEATURES



RECTIFIED



MODULAR



FIRE  
RESISTANT



ANTI  
BACTERIAL



ABRASION



FROST  
RESISTANCE



WATER  
RESISTANT



IMPACT  
RESISTANT



RESISTANT  
TO BENDING



CHEMICAL  
RESISTANT

BONZER<sup>7</sup>  
TILES

BONGRES  
600x1200mm

*Matt* COLLECTION

In these tiles, a special layer is added on the top to help achieve a non-shiny, subtle look. The most prominent feature of these tiles is their anti-slippery nature, which makes them ideal for all spaces, including those with a high water usage like bathrooms, kitchens, and balconies.





Rectified



Modular



Fire  
Resistant



Anti  
Bacterial



Abrasion



Frost  
Resistance



Water  
Resistant



Impact  
Resistant



Resistant  
To Bending



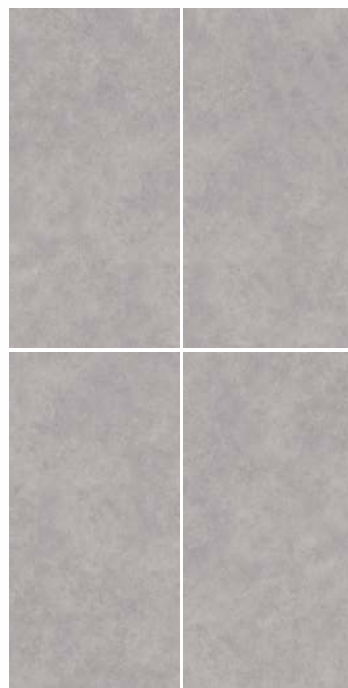
Chemical  
Resistant



CRYPTO FANGO

Size: 600x1200mm  
Finish: Matt

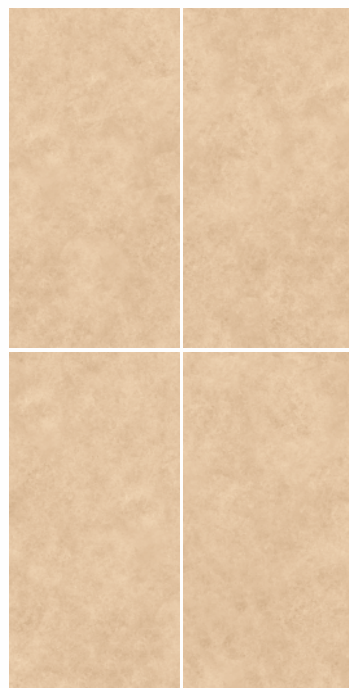
Available Random - 5



CRYPTO BEIGE

Size: 600x1200mm  
Finish: Matt

Available Random - 5



Floor : Crypto Beige  
Size: 600x1200mm | Finish: Matt





Rectified



Modular



Fire  
Resistant



Anti  
Bacterial



Abrasion



Frost  
Resistance



Water  
Resistant



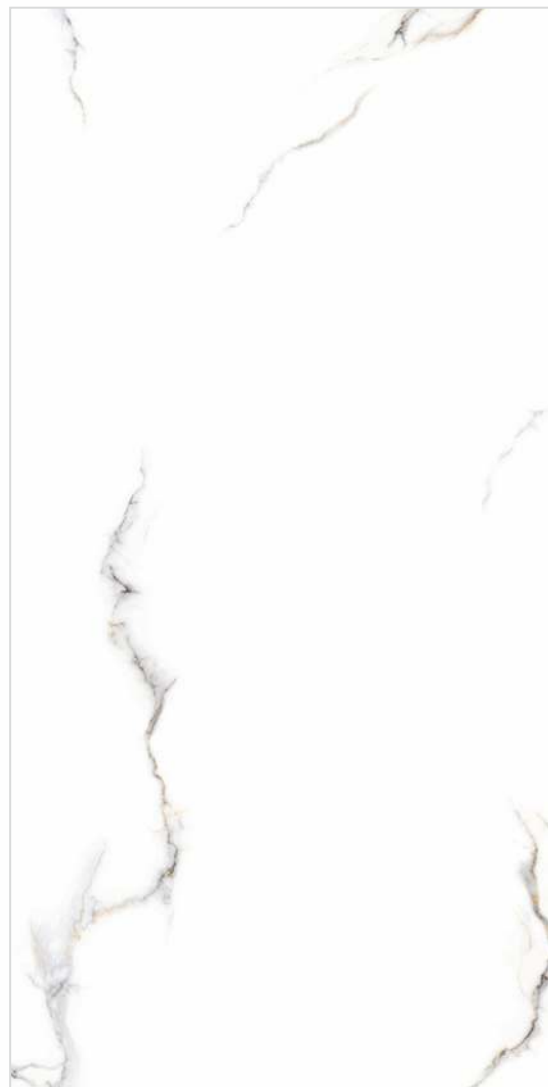
Impact  
Resistant



Resistant  
To Bending



Chemical  
Resistant



ELECTO WHITE

Size: 600x1200mm  
Finish: Matt

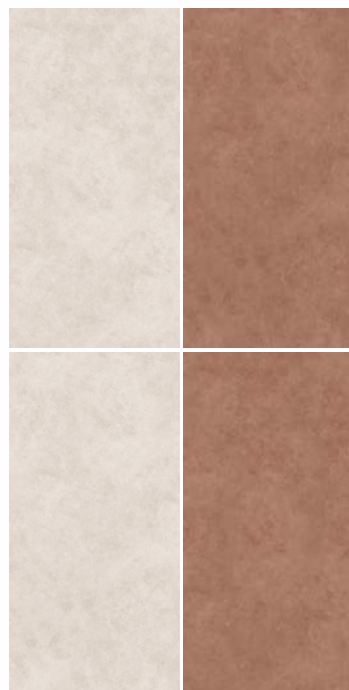
Available Random - 3



CRYPTO BIANCO  
SAHARA CRYPTO DÉCOR  
CRYPTO BROWN

Size: 600x1200mm  
Finish: Matt

Available Random - 5



Wall : Sahara Crypto Decor  
Size: 600x1200mm | Finish: Matt





Rectified



Modular



Fire  
Resistant



Anti  
Bacterial



Abrasion



Frost  
Resistance



Water  
Resistant



Impact  
Resistant



Resistant  
To Bending



Chemical  
Resistant



FEBRICO BIANCO

Size: 600x1200mm  
Finish: Matt

Available Random - 4



FEBRICO NERO

Size: 600x1200mm  
Finish: Matt

Available Random - 4



FEBRICO BROWN

Size: 600x1200mm  
Finish: Matt

Available Random - 4



Wall: Febrico Bianco  
Floor: Febrico Nero  
Size: 600x1200mm | Finish: Matt



BON~~S~~RES  
600x1200mm

# TERRAZO

Collection

The Matt Carving Effect is one  
of the best choices for interior and  
architecture design.



DIGITAL PRINTING

CARVING LAYER

BODY

HIGH GLAZED WHITE LAYER

## FEATURES



RECTIFIED



MODULAR



FIRE  
RESISTANT



ANTI  
BACTERIAL



ABRASION



FROST  
RESISTANCE



WATER  
RESISTANT



IMPACT  
RESISTANT



RESISTANT  
TO BENDING



CHEMICAL  
RESISTANT





Rectified



Modular



Fire  
Resistant



Anti  
Bacterial



Abrasion



Frost  
Resistance



Water  
Resistant



Impact  
Resistant



Resistant  
To Bending



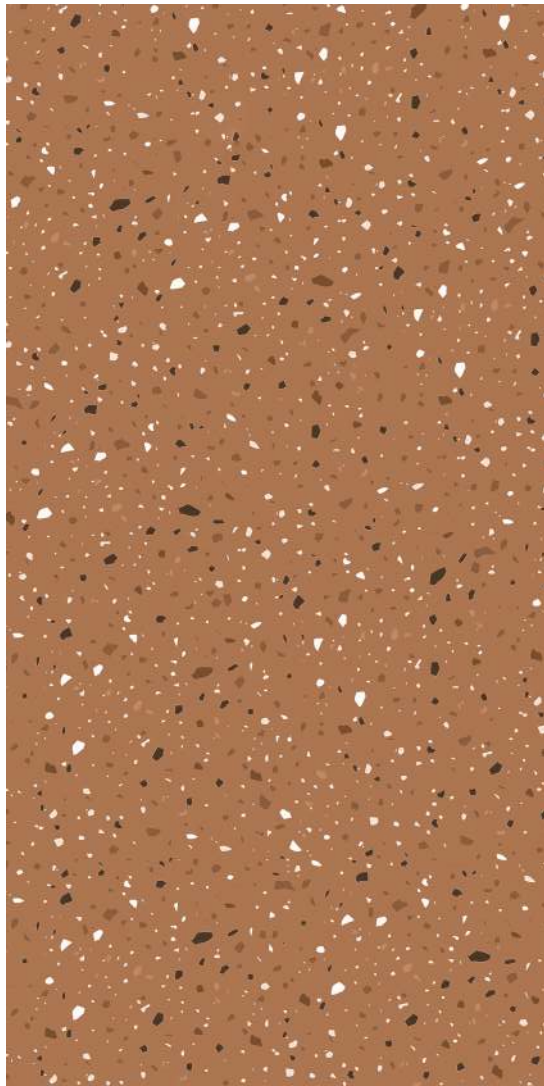
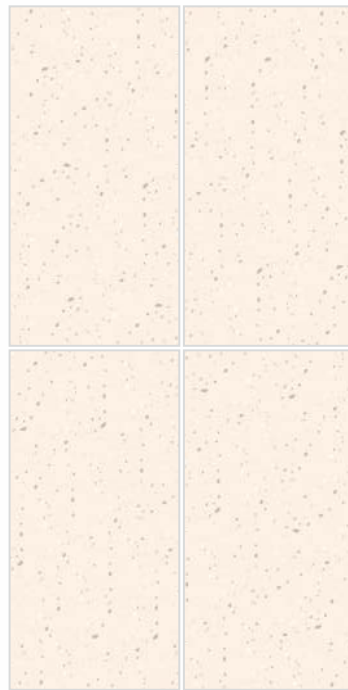
Chemical  
Resistant



GINGER BEIGE

Size: 600x1200mm  
Finish: Carving

Available Random - 2



GINGER BROWN

Size: 600x1200mm  
Finish: Carving

Available Random - 2



Wall: Ginger Beige  
Floor: Ginger Brown

Size: 600x1200mm | Finish: Carving





Rectified



Modular



Fire  
Resistant



Anti  
Bacterial



Abrasion



Frost  
Resistance



Water  
Resistant



Impact  
Resistant



Resistant  
To Bending



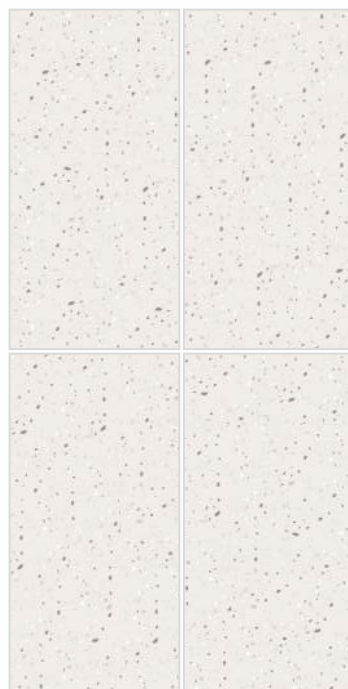
Chemical  
Resistant



GINGER BIANCO

Size: 600x1200mm  
Finish: Carving

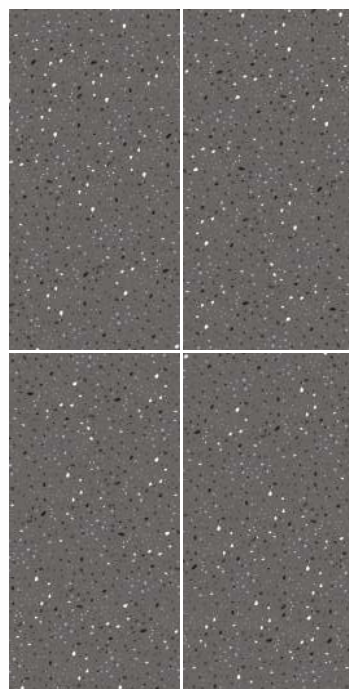
Available Random - 2



GINGER BLACK

Size: 600x1200mm  
Finish: Carving

Available Random - 2



Wall: Ginger Bianco & Ginger Black  
Floor: Ginger Bianco

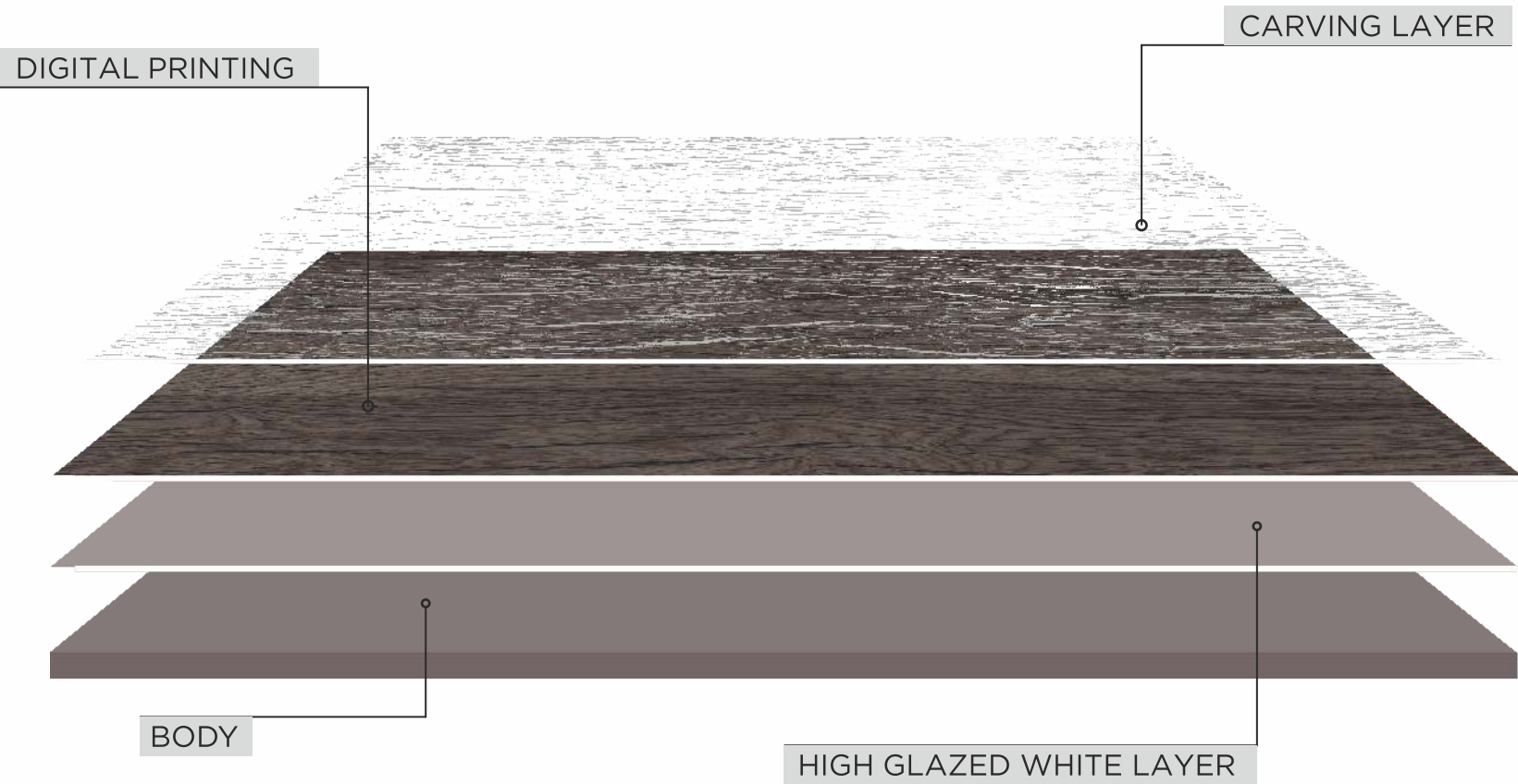
Size: 600x1200mm | Finish: Carving



**BONGRES**  
600x1200mm

WOOD *Carving*  
Collection

The Wood Carving Effect is one of the best choices for interior and architecture design. The wood carving effect not only provides a depth effect to your Surface but also adds a shining effect.



FEATURES

- |           |         |                   |                   |          |                     |                    |                     |                         |                       |
|-----------|---------|-------------------|-------------------|----------|---------------------|--------------------|---------------------|-------------------------|-----------------------|
|           |         |                   |                   |          |                     |                    |                     |                         |                       |
| RECTIFIED | MODULAR | FIRE<br>RESISTANT | ANTI<br>BACTERIAL | ABRASION | FROST<br>RESISTANCE | WATER<br>RESISTANT | IMPACT<br>RESISTANT | RESISTANT<br>TO BENDING | CHEMICAL<br>RESISTANT |





Rectified



Modular



Fire  
Resistant



Anti  
Bacterial



Abrasion



Frost  
Resistance



Water  
Resistant



Impact  
Resistant



Resistant  
To Bending



Chemical  
Resistant



TEAKWOOD NATURAL

Size: 600x1200mm  
Finish: Carving

Available Random - 6



TEAKWOOD BROWN

Size: 600x1200mm  
Finish: Carving

Available Random - 6



Floor: Teakwood Natural  
Size: 600x1200mm | Finish: Carving





Rectified



Modular



Fire  
Resistant



Anti  
Bacterial



Abrasion



Frost  
Resistance



Water  
Resistant



Impact  
Resistant



Resistant  
To Bending



Chemical  
Resistant



LARCH WOOD SILVER

Size: 600x1200mm  
Finish: Carving

Available Random - 4



LARCH WOOD NERO

Size: 600x1200mm  
Finish: Carving

Available Random - 4



Floor: Larch Wood Nero  
Size: 600x1200mm | Finish: Carving



DIGITAL PRINTING



BODY

HIGH GLAZED WHITE LAYER

FEATURES



RECTIFIED



MODULAR



FIRE  
RESISTANT



ANTI  
BACTERIAL



ABRASION



FROST  
RESISTANCE



WATER  
RESISTANT



IMPACT  
RESISTANT



RESISTANT  
TO BENDING



CHEMICAL  
RESISTANT

BONZER<sup>7</sup>  
TILES

BONGRES  
600x1200mm

VENEER  
Collection

The Matt Carving Effect is one of the best choices for interior and architecture design. The matt carving effect not only provides a depth effect to your Surface but also adds a shining effect.







Rectified



Modular



Fire  
Resistant



Anti  
Bacterial



Abrasion



Frost  
Resistance



Water  
Resistant



Impact  
Resistant



Resistant  
To Bending



Chemical  
Resistant



HOLYWOOD BISCOTTI

Size: 600x1200mm  
Finish: Matt

Available Random - 4



HOLYWOOD GOLD

Size: 600x1200mm  
Finish: Matt

Available Random - 4



Wall: Hollywood Gold  
Floor: Hollywood Biscotti  
Size: 600x1200mm | Finish: Matt





Rectified



Modular



Fire  
Resistant



Anti  
Bacterial



Abrasion



Frost  
Resistance



Water  
Resistant



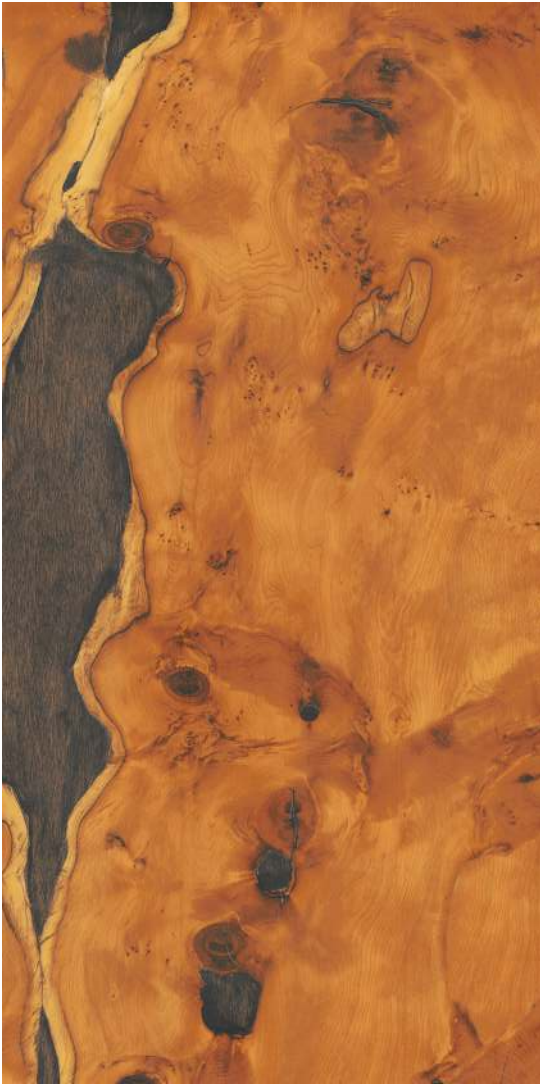
Impact  
Resistant



Resistant  
To Bending



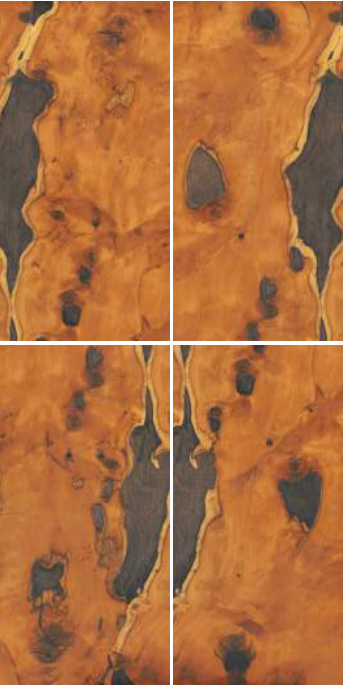
Chemical  
Resistant



CEDAR BROWN

Size: 600x1200mm  
Finish: Matt

Available Random - 4



DREAMWOOD HONEY

Size: 600x1200mm  
Finish: Matt

Available Random - 3



IRONWOOD SANDY BROWN

Size: 600x1200mm  
Finish: Matt

Available Random - 4



Floor: Ironwood Brown  
Size: 600x1200mm | Finish: Matt



**BONGRES**  
600x1200mm

# ENDLESS

Collection

The Endless collection draws its inspiration from the extraordinary expressive power of concrete and stands out for a wide range of sizes that increase designs' potential.



DIGITAL PRINTING

CARVING LAYER

BODY

HIGH GLAZED WHITE LAYER

## FEATURES



RECTIFIED



MODULAR



FIRE  
RESISTANT



ANTI  
BACTERIAL



ABRASION



FROST  
RESISTANCE



WATER  
RESISTANT



IMPACT  
RESISTANT



RESISTANT  
TO BENDING



CHEMICAL  
RESISTANT





Rectified



Modular



Fire  
Resistant



Anti  
Bacterial



Abrasion



Frost  
Resistance



Water  
Resistant



Impact  
Resistant



Resistant  
To Bending



Chemical  
Resistant



IBON OLIVE

Size: 600x1200mm  
Finish: Matt Carving

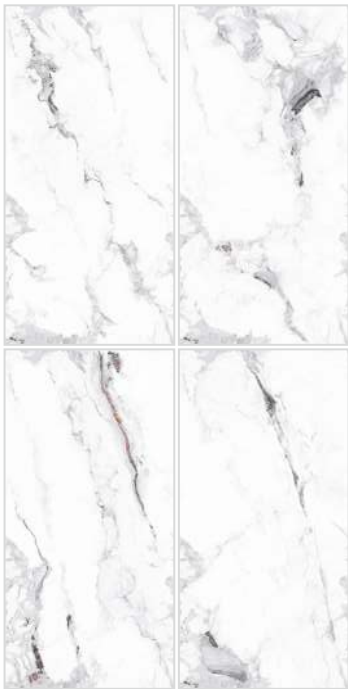
Available Random - 4



CUPID WHITE

Size: 600x1200mm  
Finish: Matt Carving

Available Random - 4



Floor: Cupid White  
Size: 600x1200mm | Finish: Matt Carving





Rectified



Modular



Fire  
Resistant



Anti  
Bacterial



Abrasion



Frost  
Resistance



Water  
Resistant



Impact  
Resistant



Resistant  
To Bending



Chemical  
Resistant



FREEDOM BROWN

Size: 600x1200mm  
Finish: Matt Carving

Available Random - 4



HALDUS GREY

Size: 600x1200mm  
Finish: Matt Carving

Available Random - 4



Floor: Freedom Brown  
Size: 600x1200mm | Finish: Matt Carving





Rectified



Modular



Fire  
Resistant



Anti  
Bacterial



Abrasion



Frost  
Resistance



Water  
Resistant



Impact  
Resistant



Resistant  
To Bending



Chemical  
Resistant



JOLIE ICE

Size: 600x1200mm  
Finish: Matt Carving

Available Random - 4



MEROPE VALLEY

Size: 600x1200mm  
Finish: Matt Carving

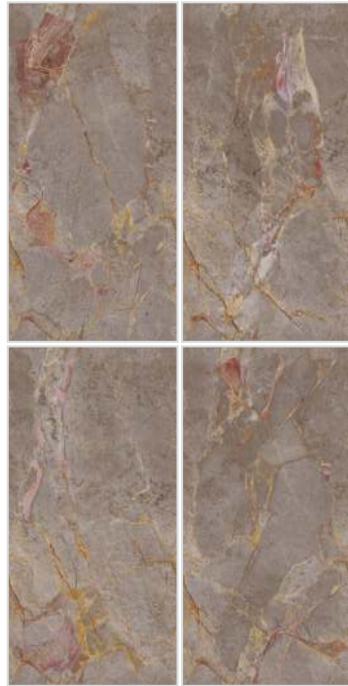
Available Random - 4



NAIS GREY

Size: 600x1200mm  
Finish: Matt Carving

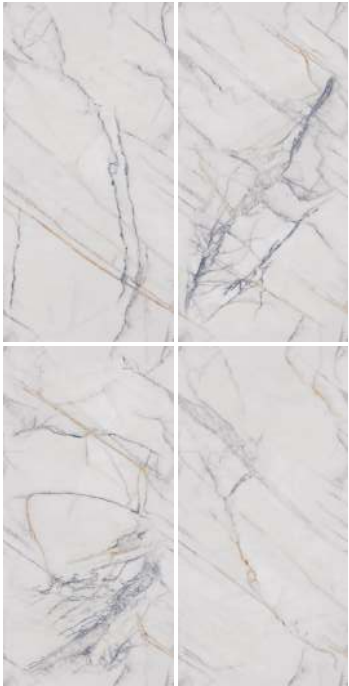
Available Random - 4



PERSIAN WHITE

Size: 600x1200mm  
Finish: Matt Carving

Available Random - 4







Rectified



Modular



Fire  
Resistant



Anti  
Bacterial



Abrasion



Frost  
Resistance



Water  
Resistant



Impact  
Resistant



Resistant  
To Bending



Chemical  
Resistant



PIETRA GREY

Size: 600x1200mm  
Finish: Matt Carving

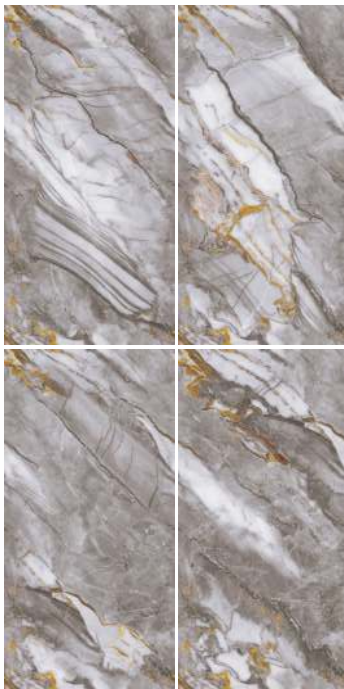
Available Random - 4



STREAM BONE

Size: 600x1200mm  
Finish: Matt Carving

Available Random - 4



Floor: Stream Bone  
Size: 600x1200mm | Finish: Matt Carving





Rectified



Modular



Fire  
Resistant



Anti  
Bacterial



Abrasion



Frost  
Resistance



Water  
Resistant



Impact  
Resistant



Resistant  
To Bending



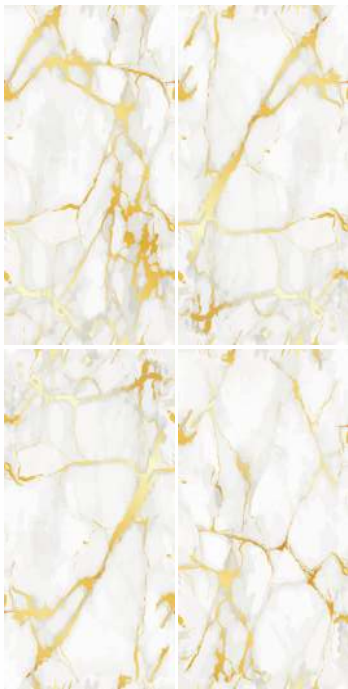
Chemical  
Resistant



THUDER GOLD

Size: 600x1200mm  
Finish: Matt Carving

Available Random - 3



SABINE WHITE

Size: 600x1200mm  
Finish: Matt Carving

Available Random - 3



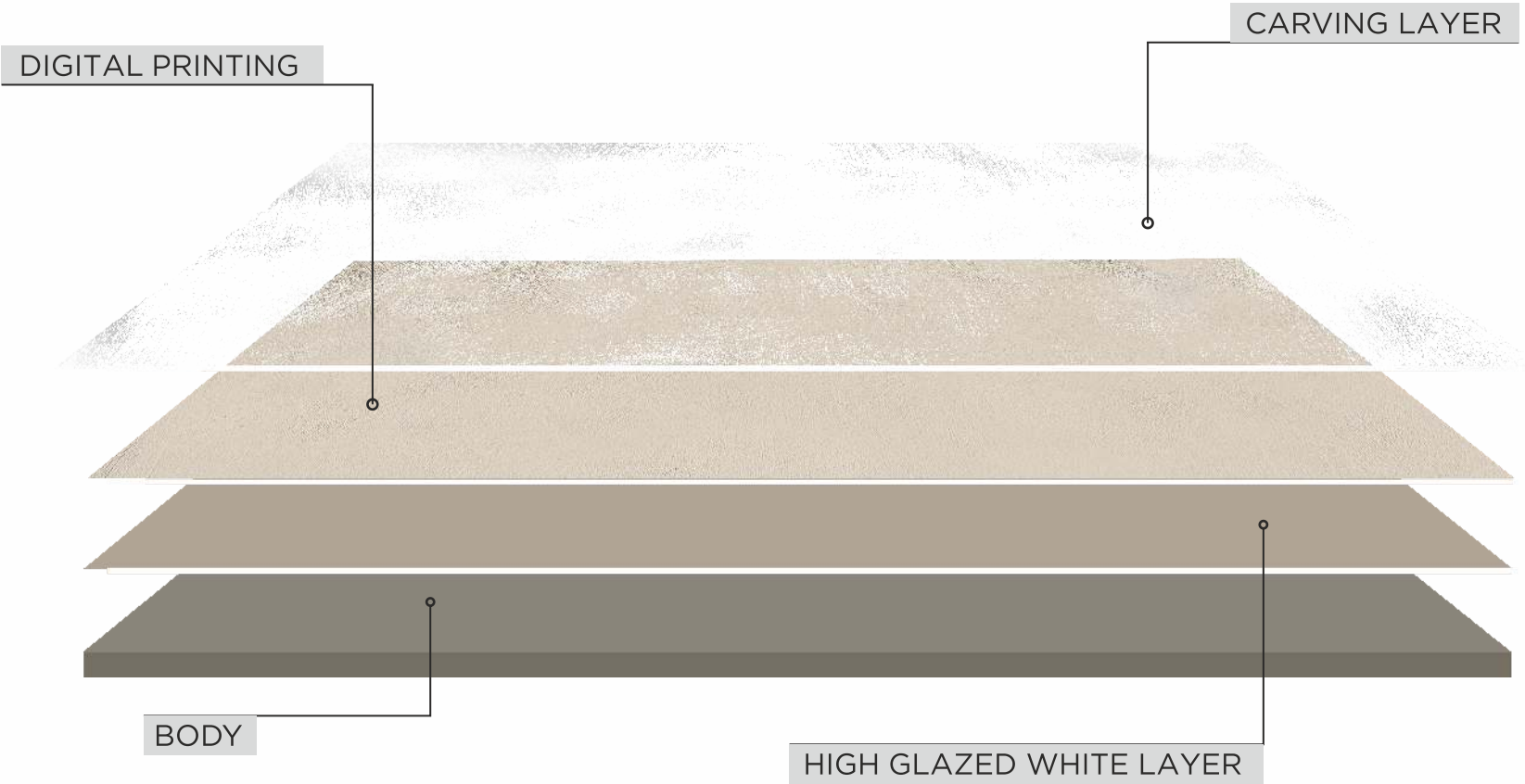
Floor: Thunder Gold  
Size: 600x1200mm | Finish: Matt Carving



**BONGRES**  
600x1200mm

*Galaxy*  
Collection

Galaxy collection draws its inspiration from the extraordinary expressive power of concrete and stands out for a wide range of sizes that increase designs' potential.



FEATURES

- RECTIFIED
- MODULAR
- FIRE RESISTANT
- ANTI BACTERIAL
- ABRASION
- FROST RESISTANCE
- WATER RESISTANT
- IMPACT RESISTANT
- RESISTANT TO BENDING
- CHEMICAL RESISTANT





Rectified



Modular



Fire  
Resistant



Anti  
Bacterial



Abrasion



Frost  
Resistance



Water  
Resistant



Impact  
Resistant



Resistant  
To Bending



Chemical  
Resistant



AQUA STONE BEIGE

Size: 600x1200mm  
Finish: Punch With Carving

Available Random - 4



AQUA STONE GREY

Size: 600x1200mm  
Finish: Punch With Carving

Available Random - 4



Wall: Aqua Stone Beige  
Floor: Aqua Stone Beige

Size: 600x1200mm | Finish: Punch With Carving





Rectified



Modular



Fire  
Resistant



Anti  
Bacterial



Abrasion



Frost  
Resistance



Water  
Resistant



Impact  
Resistant



Resistant  
To Bending



Chemical  
Resistant



SERABIA IVORY

Size: 600x1200mm  
Finish: Punch With Carving

Available Random - 4



SERABIA MIST

Size: 600x1200mm  
Finish: Punch With Carving

Available Random - 4



Wall: Serabia Mist  
Floor: Serabia Ivory

Size: 600x1200mm | Finish: Punch With Carving



**BONGRES**  
600x1200mm

*Monolith* Punch  
collection

A Massive Structure The 70-story Monolith Is One of Europe's Tallest Buildings. The noun monolith comes from the Greek words monos, meaning "single" and lithos, meaning "stone."



DIGITAL PRINTING

CARVING LAYER

BODY

HIGH GLAZED WHITE LAYER

FEATURES



RECTIFIED



MODULAR



FIRE  
RESISTANT



ANTI  
BACTERIAL



ABRASION



FROST  
RESISTANCE



WATER  
RESISTANT



IMPACT  
RESISTANT



RESISTANT  
TO BENDING



CHEMICAL  
RESISTANT





Rectified



Modular



Fire  
Resistant



Anti  
Bacterial



Abrasion



Frost  
Resistance



Water  
Resistant



Impact  
Resistant



Resistant  
To Bending



Chemical  
Resistant



SAHARA PINK

Size: 600x1200mm  
Finish: Punch With Buffing

Available Random - 4



SAHARA GREY

Size: 600x1200mm  
Finish: Punch With Buffing

Available Random - 4



SAHARA GRAFITE

Size: 600x1200mm  
Finish: Punch With Buffing

Available Random - 4



Wall: Sahara Grey  
Floor: Sahara Grafite

Size: 600x1200mm | Finish: Carving





Rectified



Modular



Fire  
Resistant



Anti  
Bacterial



Abrasion



Frost  
Resistance



Water  
Resistant



Impact  
Resistant



Resistant  
To Bending



Chemical  
Resistant



SAHARA NATURAL  
SAHARA CRYPTO DÉCOR  
SAHARA BLUSH

Size: 600x1200mm  
Finish: Punch With Buffing

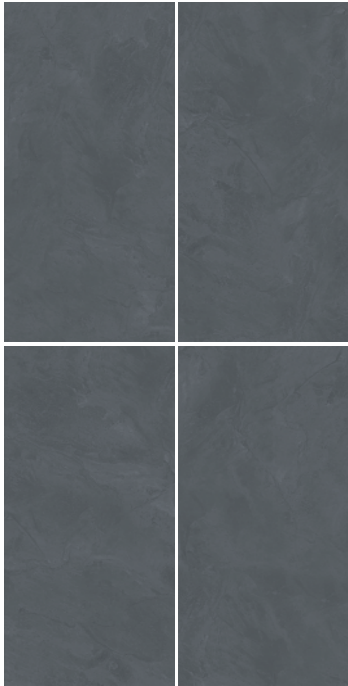
Available Random - 4



SAHARA AZUL

Size: 600x1200mm  
Finish: Punch With Buffing

Available Random - 4



Wall: Sahara Blush  
Floor: Sahara Azul

Size: 600x1200mm | Finish: Punch With Buffing





Rectified



Modular



Fire  
Resistant



Anti  
Bacterial



Abrasion



Frost  
Resistance



Water  
Resistant



Impact  
Resistant



Resistant  
To Bending



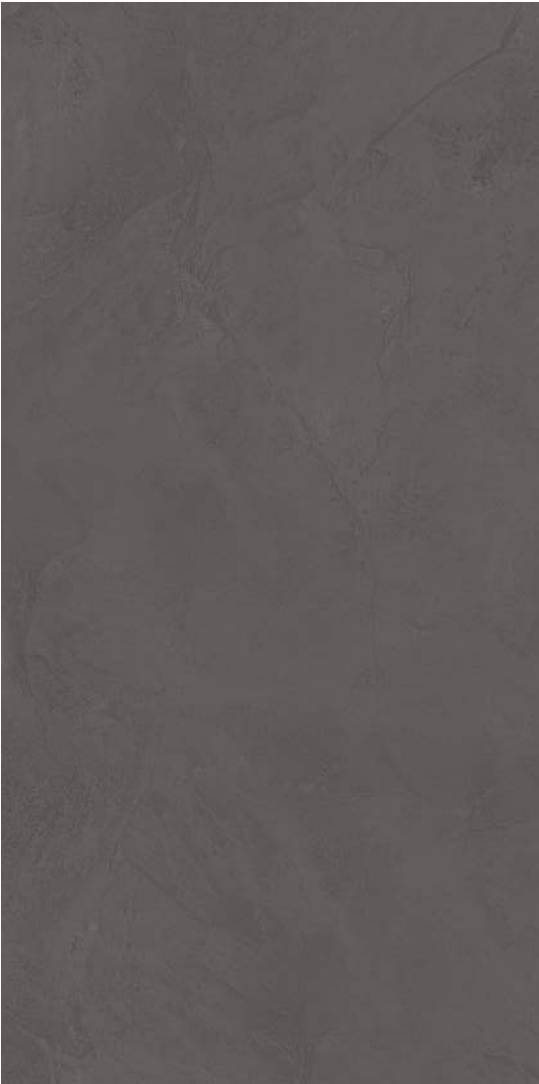
Chemical  
Resistant



SAHARA ASH

Size: 600x1200mm  
Finish: Punch With Buffing

Available Random - 4



SAHARA GRIS

Size: 600x1200mm  
Finish: Punch With Buffing

Available Random - 4



Wall: Sahara Ash  
Floor: Sahara Gris

Size: 600x1200mm | Finish: Punch With Buffing





Rectified



Modular



Fire  
Resistant



Anti  
Bacterial



Abrasion



Frost  
Resistance



Water  
Resistant



Impact  
Resistant



Resistant  
To Bending



Chemical  
Resistant



YUKON BEIGE

Size: 600x1200mm  
Finish: Punch With Buffing

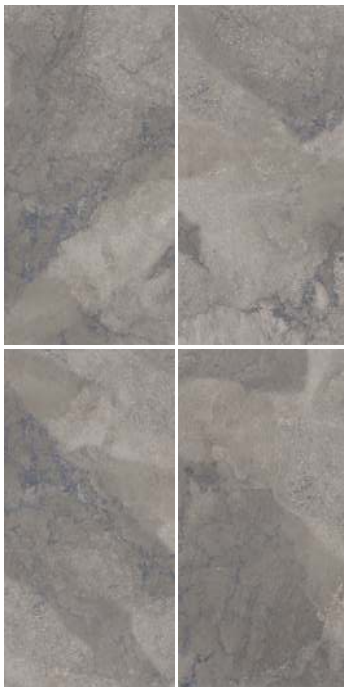
Available Random - 4



YUKON NAVY

Size: 600x1200mm  
Finish: Punch With Buffing

Available Random - 4



YUKON NATURAL

Size: 600x1200mm  
Finish: Punch With Buffing

Available Random - 4



Wall: Yukon Beige  
Floor: Yukon Natural

Size: 600x1200mm | Finish: Punch With Buffing





Rectified



Modular



Fire  
Resistant



Anti  
Bacterial



Abrasion



Wall: Yukon Beige  
Floor: Yukon Natural

Size: 600x1200mm | Finish: Punch With Buffing

TECHNICAL SPECIFICATION 600X1200MM BON GRES				
CHARACTERSTICS	Requiremet as per ISO 13006:2018 0.5%< E ≤ 3.0 Group Blb	Requiremet as per IS 15622:2017 0.08% < E ≤ 3.0 Group Blb	BONZER7 VALUE	TEST METHOD
Deviation in length & Width	± 0.3%	± 0.1%	± 0.1%	ISO 10545-2/ IS13630 -1
Deviation in Thickness	± 5.0%	± 5.0%	± 3.0%	ISO 10545-2/ IS13630 -1
Straightness of Edge	± 0.3%	± 0.1%	± 0.1%	ISO 10545-2/ IS13630 -1
Rectangularity	± 0.3%	± 0.1%	± 0.1%	ISO 10545-2/ IS13630 -1
Surface Flatness	± 0.4%	± 0.5%	± 0.2%	ISO 10545-2/ IS13630 -1
Surface Quality	Minimum of 95 % of the tiles are to be free from visible defects which can impair the appearance of a major area of tiles	Minimum of 95 % of the tiles shall be free from visible defects that would impair the appearance of a major area of tiles	Minimum of 95 % of the tiles shall be free from visible defects that would impair the appearance of a major area of tiles	ISO 10545-2/ IS13630 -1
Water Absorption % by Wt.	0.5% < E ≤ 3.0%, Individual Max 3.3%	Average 0.08% < E ≤ 3.0%, Individual 3.3% Max	< 3.0%	ISO 10545-3/ IS13630-2
MOR in N/mm2	Min 30, Individual Min. 27	Average 30, Ind Min. 27	Avg 32	ISO 10545-4/ IS13630-6
Breaking Strength in N	1100 Min for thickness ≥ 7.5mm	1100 Min for thickness ≥ 7.5mm	> 1300	ISO 10545-4/ IS13630-6
Bulk Density (gm/cc)	2.0 Min	2.0 Min	2.2	ISO 10545-3/ IS13630-2
Impact Resistance	Test method available	0.55, Min	> 0.55	ISO 10545-5/ IS13630-14
Resistance to Surface abrasion	Report abrasion class & cycles passed	Class II, Min	Class III, Min	ISO 10545-7/ IS13630-11
Moh'S Scratch Hardness	N/A	Min, 5	Min, 5	IS13630-13
Co-efficient of Linear thermal expansion from ambient temp to 1000 C (K <sup>-1</sup> )	Test method available	7x10 <sup>-6</sup> Max	Max 6x10 <sup>-6</sup>	ISO 10545-8/ IS13630-4
Thermal Shock Resistance	Test method available	10 Cycle Min	10 Cycle Min	ISO 10545-9/ IS13630-5
Moisture Expansion in mm/M	Test method available	0.02 Max	NIL	ISO 10545-10/ IS13630-3
Crazing Resistance	Required	4 Cycles at 7.5 Bar, Min	6 Cycle	ISO 10545-11/ IS13630-9
Frost Resistance	Required	Required, if agreed to between manufacturer & purchaser	Frost Proof	ISO 10545-12/ IS13630-10
Resistance to Staining of glazed Tiles	Min. Class 3	Class 1, Min.	Class 1	ISO 10545-14/ IS13630-8
Resistance to House hold Chemical and swimming Pools	Minimum B	Min. Class AA	Class AA	ISO 10545-13/ IS13630-8
Resistance to Acid & Alkalis (Except HF Acid)	Manufacturer is to State Classification	Class AA	Class AA	ISO 10545-13/ IS13630-8

\* Not Applicable for Glossy finishes  
\*\* These parameters are not applicable for structured punches

PACKING SPECIFICATION				
Size ( mm )	Packing	Weight ( Kg.)	Thickness	Area Sq. mtr / Box
600x1200mm	3 Pcs.	40 Kg	8.5	2.16 Sq.mtr

**DISCLAIMER :** Bonzer 7 Tiles reserves the right to delete & amend either totally or partially, any of the colors, shapes, sizes, references and other technical specifications contained in this catalogue at anytime. The colors shown of tiles in this catalogue are purely illustrative and limited to printing process. Please refer actual sample before final selection. The details of sizes, colors, references should be verified for typographical errors. All complaints need to be reported within 10 days of purchase. Always follow instructions to avoid complaint due to bad masonry.

- \*Notes:**
- All technical specifications in this catalogue are for premium grade material only.
  - **SHADE/SIZE VARIATIONS** are inherent characteristics of ceramics. Certain products purposely have variations which are part of design & process. The same have been indicated.
  - It is recommended to blend tiles by mixing tiles from various boxes & check for natural hue before fixing the tiles.
  - It is recommended to check the tiles before laying/fixing. Quality standards cover only 1st/premium quality only.
  - Company's liability is limited to material that has not been laid.
  - **NO COMPLIANT SHALL BE ENTERTAINED ON TILES ALREADY FIXED/LAID.**
  - The liability is also limited to the material supplied by the company; no other claim is entertained under any circumstances.
  - No complaint is entertained on decoration done on tiles, other than the ones done by BONZER 7 TILES

**GENERAL NOTE:** ANY COMPLAINT MUST BE BROUGHT TO THE COMPANY'S NOTICE WITHIN 10 DAYS OF PURCHASE & BEFORE FIXING OF TILES.

**How to avoid defects & complaints :**

- Use good quality Tiles
- Choose good quality Tiles, with proper consideration to area intended of usage.
- Avoid careless laying of Tiles
- Avoid poor maintenance-for instance, by cleaning with strong chemicals or with abrasive equipment e.g. metallic scrubber
- Always keep Tiled area clean & ensure dusting/mopping regularly
- Put Doormats/Foot-mats at all strategic locations to avoid loose debris/dust from entering the Tiled area

**APPLICATION**



AIRPORT TERMINALS



DISCOTHEQUES



INDUSTRIES



RELIGIOUS PLACES



GYMNASIUMS



PUBS & BARS



SHOPPING MALLS



HOTELS



SCHOOLS



DOMESTIC



OFFICES



SUPER MARKETS



CORRIDORS/HALLS

**List of Detergents for Removal of Stain**

STAIN (Created by):	Beer	Blood	Calcer	Concret	Cigaretta	Soft Drinks	Colgate	Edible Oil	Glue	Ice Cream	Ink	Juices	Marker Ink	Nicotine	Paints	Resin	Rust	Tar	Tea	Urine	Wine
<b>SOLVENTS</b> (Turpentine, acetone, trichloroethylene - line etc.)								*	*	*		*			*	*	*				
<b>SODIUM HYPO</b> Chlorite (NaOCL)												*							*		
<b>ACIDS DILUTED</b> (Hydrochloric acid*)		*	*	*	*	*				*			*	*	*	*	*		*	*	*
<b>ALKALI</b> (Sodium hydroxide/potassium hydroxide)	*	*				*	*		*												*

\*Commercial grade shall not be used